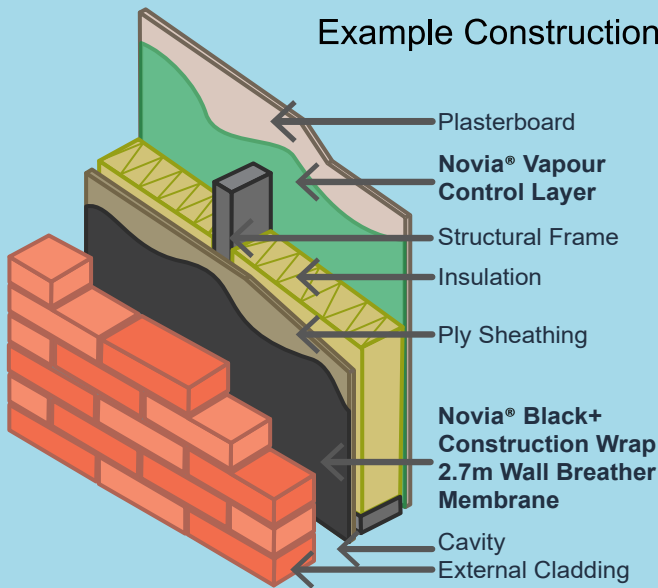


Novia® Black+ Construction Wrap Breather Membrane is a 2.7m x 100m wall breather membrane which is a 3-layer, high performance, yet lightweight, breather membrane designed for use in all insulated wall applications. **Novia® Black+ Construction Wrap** has excellent Class W1 water resistance but still provides high breathability. Due to **Novia® Black+ Construction Wrap's** high performance the material meets EN 13859-1 for pitched roofing, as well as EN 13859-2 for walls. However due to the roll size, roof applications are not advised. It also complies with EN 13501-1 Fire Classification E. The product is completely black on one side, grey on the reverse, with no text or images, except for a 150mm overlap line.



Example Construction



Key Features:

- 3-layer, high performance wall breather with microporous core
- Class W1 water resistance to EN 1928
- Airtight, and vapour permeable
- Good tensile and nail tear strength
- Class E (fire) to EN 13501-1
- 1 months UV resistance
- UKCA to EN 13859-1 (roofs) and EN 13859-2 (walls)
- Ideal for timber frame constructions
- Low cost, W1 wall breather membrane

For projects where a low cost solution is required, we also offer **Novia® Building Wrap**. It is a 2.7m x 100m entry level wall breather, ideal for timber frame constructions, and is highly air and vapour open. See datasheet for more product specific information.

	Value	Units	Test Method
Standard Width	2.7	m	
Roll Length	100	m	
Roll Weight	28.5	kg	EN 1849-2
Nominal weight	102	g/m ²	EN 1849-2
Tensile strength MD / CD	250 / 140	N/50mm	EN 12311-1
Elongation MD / CD	60 / 70	%	EN 12311-1
Tear resistance MD / CD	100 / 95	N	EN 12310-1
Sd value	0.029	m	EN ISO 12572
Resistance to water penetration	W1	Class	EN 1928
Resistance to water penetration (after ageing)	W1	Class	EN 1928
Low temperature stability (no cracking at)	- 60	°C	EN 1109
Reaction to fire	E	Class	EN 11925-2
UV resistance	1 Month		



Use the QR code to link direct to the product webpage.



DS0925B+CWBREATH

NOTE: COSHH safety datasheets available upon request.

Date Published: September 2025. Novia's most recently published datasheet supercedes any previous versions which may still be in circulation.



® Black+ Construction
Wrap Wall Breather
2.7m x 100m

UK
CA

Installation Guidance for Walls:

Fix **Novia® Black+ Construction Wrap** to the wall structure; upper layers should overlap lower layers. Work from the bottom moving upwards, using minimum overlaps of 100mm on the horizontal joints. Do not begin a vertical lap joint within 300mm of a corner, and vertical laps should be at least 150mm. Ensure the bottom timber is also protected by an overlap. Fix at suitable intervals with galvanised nails, stainless staples or similar fixings that will be permanent.

Do not leave the membrane unnecessarily exposed to weathering, high winds, excessive UV etc. as this may cause damage over time. If you must leave the membrane exposed for extended periods of time, consider the use of suitable temporary protection materials.

Installation Tapes:

We strongly advise the use of Novia installation tapes. The use of tapes will greatly improve the final installation quality by improving performance and overall airtightness of the structure, reducing wind chatter and allow for any unexpected on-site damage to be repaired quickly. We offer a single-sided **Novia® Breather Membrane Lap Tape** for basic installations. For high specification work where there is even greater emphasis on air-tightness we offer the optional **Novia® Double Sided Lap Tape**. For the very best standards of installation and air-tightness, we advise the use of both types of tape, which will ensure a long lasting, high quality, breathable and air-tight seal is formed.

Other Notes:

- Ensure that a Novia Air & Vapour Control Layer such as **Novia® 500g, 1000g or 1200g** (virgin grade polythene AVCLs) or **Novia® VC200 Reflective**, is installed on the warm side of the insulation to limit unwanted interstitial condensation. As little as 1% - 3% moisture contamination within the insulation can adversely affect the achieved thermal performance by more than 30%.
- Always handle material carefully to prevent tears and punctures. Repair any on-site damage with Novia tapes.
- All Novia products should be stored horizontally, indoors and out of direct sunlight. External storage must be on a temporary basis. When stored externally, Novia products should be covered and protected from exposure to weather conditions, especially wind, rain, frost and UV. Pallets should not be stacked.

This datasheet represents the latest understanding of the subject. However, it is for the ultimate user to determine suitability of Novia products within specific applications. The advice and information we have provided is general in nature, and is subject to future revision.

Date Published: September 2025. Novia's most recently published datasheet supercedes any previous versions which may still be in circulation.

DS0925B+CWLBREATH